



**Baerz & Co**

LUXURY HOMES

INTERNATIONAL

**Lintgen**

**Luxembourg**

**€2,300,000**



**Makelaarschap**

Onderdeel van **PRTIRS**



**Makelaarschap - Elburg**

Jufferenstraat 1  
8081 CP Elburg

+31 0525745805  
[welkom@makelaarschap.nl](mailto:welkom@makelaarschap.nl)





The image shows a modern interior space. On the left, a wall is clad in vertical wood planks. The main wall is a light, neutral color. Mounted on this wall is a large, black metal grid frame. Inside the grid, various light fixtures are displayed, including a large yellow drum shade, a tall copper-colored textured shade, a chandelier, a wire mesh globe, a woven basket shade, a green rectangular shade, and a small white lamp. To the right, there is a large window with a black frame. Below the window is a dark blue metal cabinet with two doors and a wooden countertop. The floor is made of large, dark grey tiles.

by

---

Baerz & Co

---

LUXURY HOMES

---



by  
Baerz & Co  
LUXURY HOMES



by  
Baerz & Co

## Lintgen

- 7458

### ASKING PRICE

€2,300,000

Status

Acceptance

### CONSTRUCTION

Kind of house

House, House

Building type

Construction period

2013

Particulars

### SIZES AND LOCATION

Living area

320 m²

Plot size

705 m²

Location





**Makelaarschap**  
Onderdeel van **PRTNRS**

### **Makelaarschap - Elburg**

Jufferenstraat 1  
8081 CP Elburg

+31 0525745805  
welkom@makelaarschap.nl









---

## Lintgen

- 7458

### LAYOUT

BedRooms	4
BathRooms	2
Floors	4
Facilities	Electric awnings, Triple glazing, Double flow ventilation, Air-conditioning, Fireplace, Electric shutters, Alarm system, Videophone

### ENERGY

Class	B
Index	
End date	

### MISCELLANEOUS

Outside maintenance	Excellent condition
---------------------	---------------------

### C.H.

Heating	Convector
Hot water	Hot water tank



---

## Lintgen

- 7458

### GARAGE

Amount	1
--------	---

### GARDEN

Gardens	Garden
---------	--------

### DESCRIPTION

Positioned on a hillside, bathed in light, this luxurious house offers breathtaking views of the Alzette valley.

This contemporary house of 490 m2 including 320 m2 of living space is ideally located on the heights of Lintgen, a village surrounded by forests and connected to the capital and Kirchberg in less than 10 minutes.

The ground floor consists of an entrance hall, boiler room, separate toilet, a hobby room, a garage for 4 cars and a laundry room.

On the 1st floor, you will find the hyper-equipped kitchen, with a dining room, living room with access to the terrace, storage room, separate WC, office with access to a second terrace.

The 2nd floor consists of a master suite with dressing room, shower room and terrace exit, two bedrooms, a bathroom, 1 separate toilet.

The attic is furnished with a hobby room.

---

**Lintgen**

- 7458

The agency fees are payed by the seller.



A photograph of a modern interior space. On the right, there is a staircase with light-colored wooden steps and a white balustrade. The wall on the left is white and features a single circular recessed light fixture. The floor is made of wide-plank light-colored wood. The overall aesthetic is clean, minimalist, and contemporary.

by

---

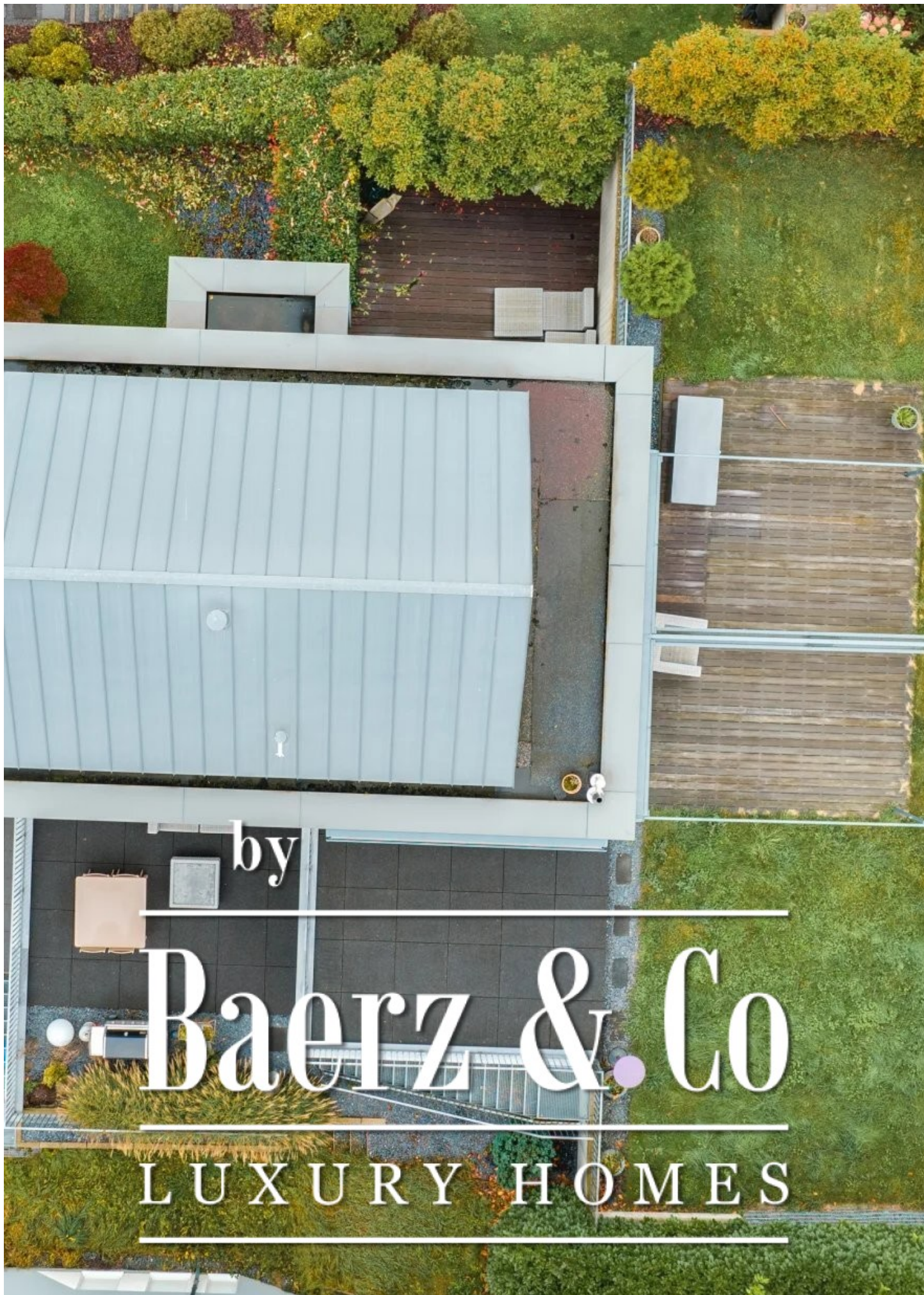
Baerz & Co

---

LUXURY HOMES

---





by

Baerz & Co

LUXURY HOMES





by

---

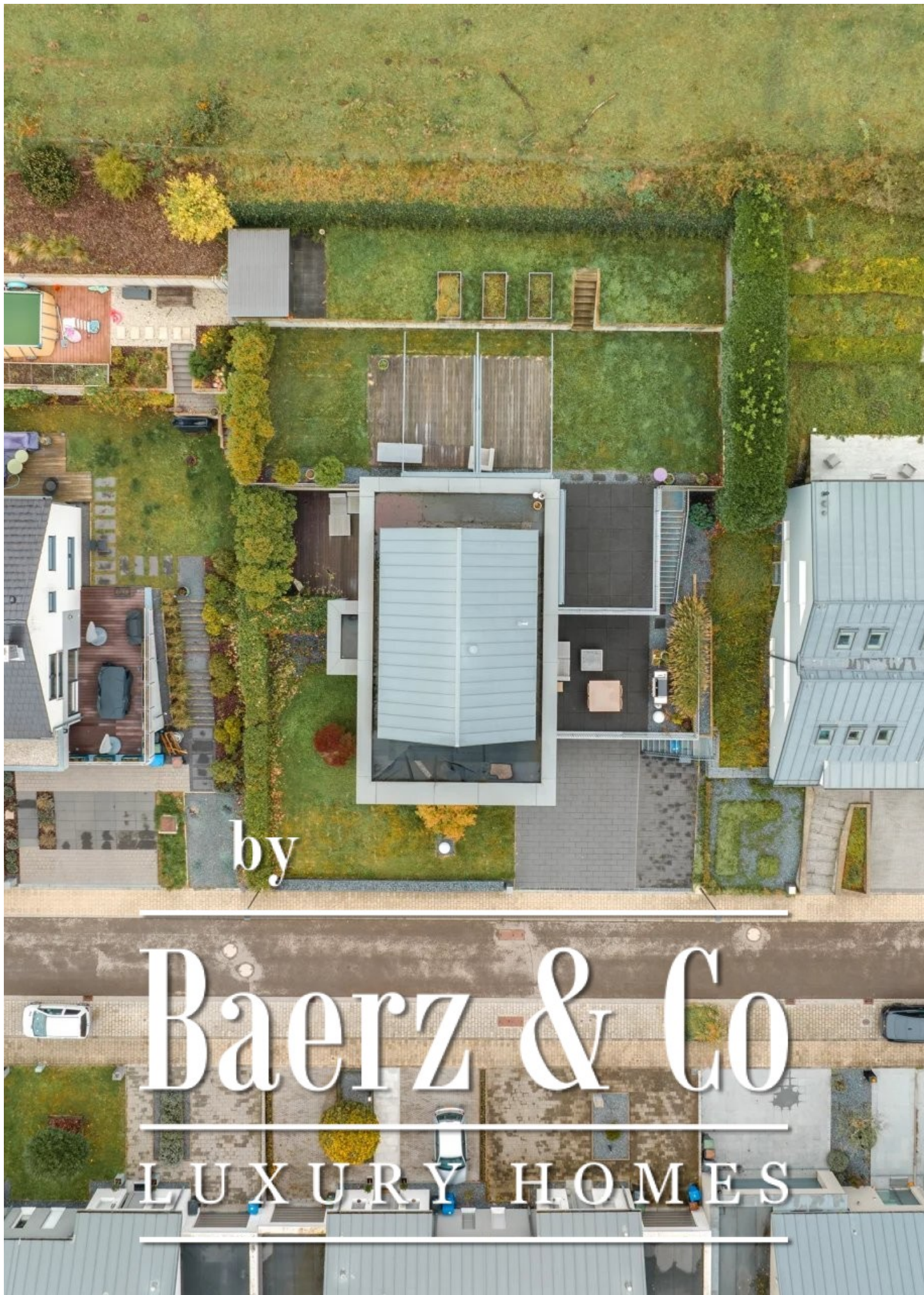
Baerz & Co

---

LUXURY HOMES

---





by

---

Baerz & Co

---

LUXURY HOMES

---



## **MAKELAARSCHAP - ELBURG**

Jufferenstraat 1  
8081 CP Elburg

+31 0525745805  
welkom@makelaarschap.nl

**WWW.MAKELAARSCHAP.NL**



**WWW.BAERZ.COM**