



Baerz & Co

LUXURY HOMES

INTERNATIONAL

NOORDWIJK

Gooweg 14 - 2203 AB

Netherlands

€4,600,000 k.k.



Makelaarschap

Onderdeel van **PRTS**



Makelaarschap - Elburg

Jufferenstraat 1
8081 CP Elburg

+31 0525745805
welkom@makelaarschap.nl







NOORDWIJK

Gooweg - 2203 AB

ASKING PRICE

€4,600,000 k.k.

Status beschikbaar

Acceptance in overleg

CONSTRUCTION

Kind of house Landhuis, vrijstaande woning

Building type bestaande bouw

Construction period 1922

Particulars

SIZES AND LOCATION

Living area 494 m²

Other indoor space 178 m²

External storage space 32 m²

Exterior attached space 71 m²

Volume 2011 m³

Plot size 7457 m²

Location aan bosrand, in woonwijk, beschutte ligging, in bosrijke omgeving



Makelaarschap
Onderdeel van **PRTNRS**

Makelaarschap - Elburg

Jufferenstraat 1
8081 CP Elburg

+31 0525745805
welkom@makelaarschap.nl







NOORDWIJK

Gooweg - 2203 AB

LAYOUT

Rooms	9
BedRooms	4
BathRooms	3
Floors	4
Facilities	mechanische ventilatie, alarminstallatie, zwembad, jacuzzi, stoomcabine, rookkanaal, sauna

ENERGY

Class	C
Index	
End date	2032-12-27

MISCELLANEOUS

Insulation	dubbel glas
Type of roof	samengesteld dak
Roof materials	riet
Inside maintenance	uitstekend
Outside maintenance	uitstekend

NOORDWIJK

Gooweg - 2203 AB

C.H.

Heating	cv ketel, open haard, vloerverwarming gedeeltelijk
Boiler type	Nefit Topline HR 70
Fuel	gas
Ownership	eigendom
Combined boiler	1
Hot water	cv ketel, elektrische boiler eigendom

SHED

Type	vrijstaand steen
Facilities	voorzien van verwarming, voorzien van elektra
Amount	2

GARAGE

Type	vrijstaand steen
Facilities	elektra, elektrische deur
Capacity	2
Dimensions	562x579 (33)
Amount	1

NOORDWIJK

Gooweg - 2203 AB

GARDEN

Gardens	tuin rondom
---------	-------------

PARKING

Facilities	op eigen terrein
------------	------------------

DESCRIPTION

Rarely does such a magnificent residence come up for sale!

Living with grandeur.

Very beautiful and imposing thatched country house in English style, with guest house, veranda, spa, outdoor pool and double garage. The attractive country house 'de Broke' was thoroughly renovated in 2012 using high quality materials and equipped with every luxury and comfort. Located on a large plot in a beautiful wooded area but also the private garden is very beautifully landscaped and offers lots of privacy. The spacious entrance to the plot with an automatically operated entrance gate is beautifully landscaped with lots of greenery and offers parking for up to 12 cars.

Both the house and the architecturally landscaped garden are in perfect condition.

Built in 1922; Living area 494m²; Capacity 2.011m²; Guest house 37m²; Land 7.457m².

Upon entering the house one enters the cozy hall with fireplace. On the right side are the study and stairs to the first floor and on the left side the checkroom and the large luxury kitchen with gas fireplace and spacious luxury utility room with access to the garden.

NOORDWIJK

Gooweg - 2203 AB

On the garden side of the house are a large expanded living room, a men's room and a spacious dining room that is connected to the kitchen through en-suite sliding doors.

From the kitchen there is access to the large basement area where the wine cellar, boiler room and storage rooms can be found.

1st floor;

On the floor you will find the master bedroom with gas-fired fireplace and its own large, luxurious bathroom, 3 large bedrooms with luxurious built-in closets and also each with its own bathroom, a dressing room and a large laundry room with custom closet for the washing equipment.

Attic;

The large storage attic is accessible via a Vlizotrap.

Guest house and garage;

Above the double garage is the luxury guest house which has a kitchen and a bathroom. Under the garage is the technical area serving the pool and spa.

Porch;

The porch has a large fireplace, spacious terrace and an extensive wellness area with outdoor shower.

Garden;

The beautiful and architecturally landscaped garden has a forest, several beautiful flower beds and terraces, a pergola, a pond and a heated pool.

Location;

The country house is situated on a large plot of land, landscaped with several terraces and surrounded by hedges and trees so privacy is assured. Highways to the N206 and the A44/A4 are in the immediate vicinity so Schiphol Airport can be reached in 20 minutes. Beach, sea and dunes are within cycling distance.

NOORDWIJK

Gooweg - 2203 AB

Noordwijk is a fashionable seaside resort and has a large choice of sports facilities, stores, restaurants and entertainment venues for young and old.

Details;

- multiple fireplaces, wood or gas fired;
- alarm system with motion sensors;
- authentic details such as wall ornaments and wooden floors;
- the natural stone floor of the first floor has underfloor heating;
- 4 bedrooms, each with its own bathroom;
- heated outdoor pool;
- outdoor shower;
- wellness with sauna, Turkish bath, jacuzzi, plunge pool and shower facilities;
- porch with heaters and wood-burning fireplace in stone fireplace;
- several natural stone terraces;
- sprinkler system with own source;
- beautiful architect-designed garden;
- parking for up to 12 cars on private property;
- spacious guest house;
- the entire residence is in excellent condition;
- this property is an iconic object.

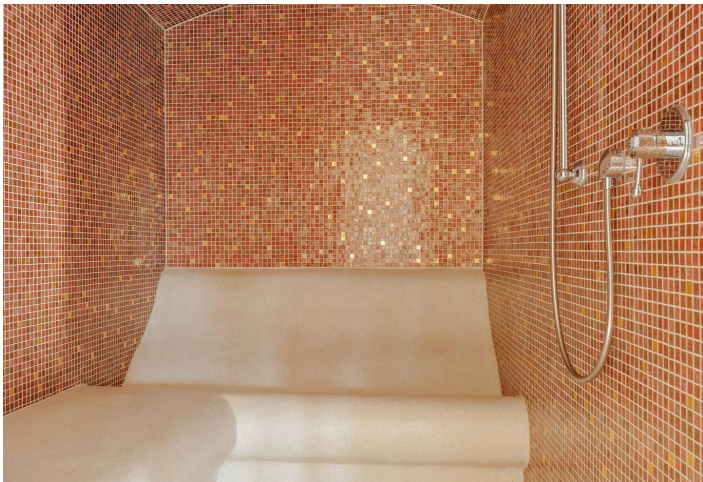


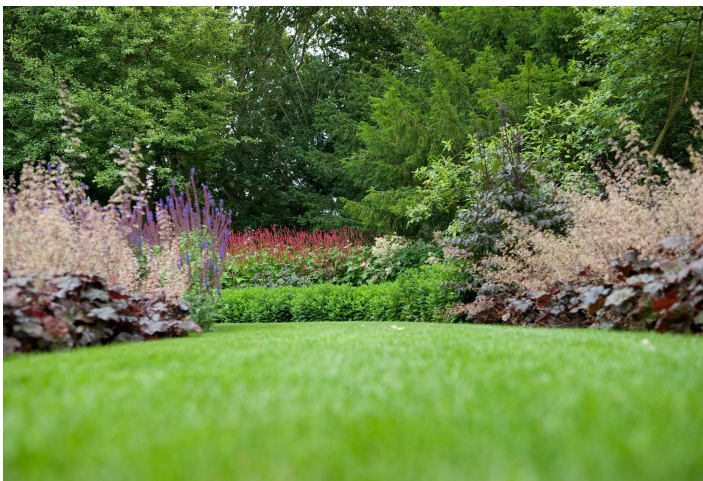
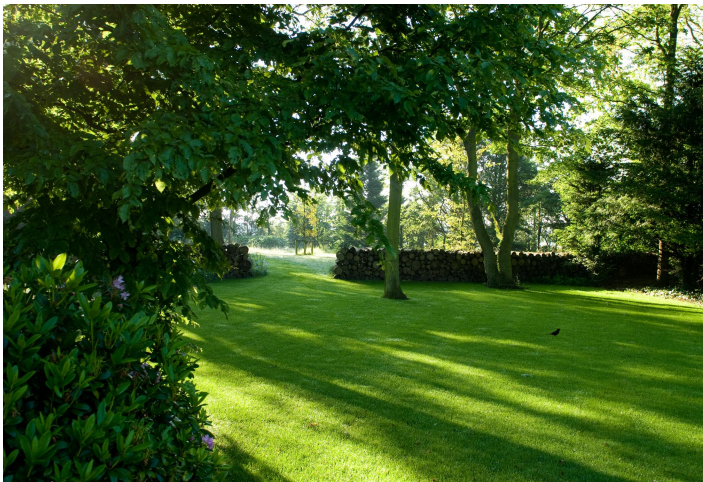




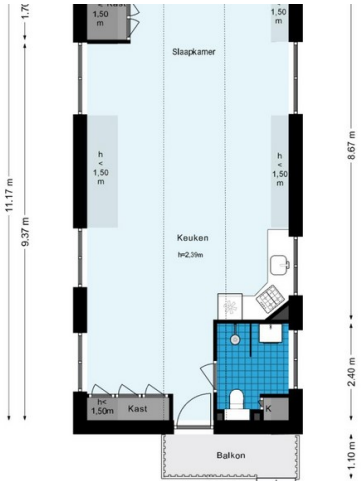
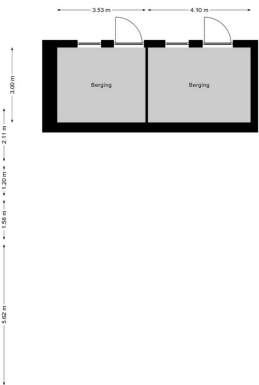
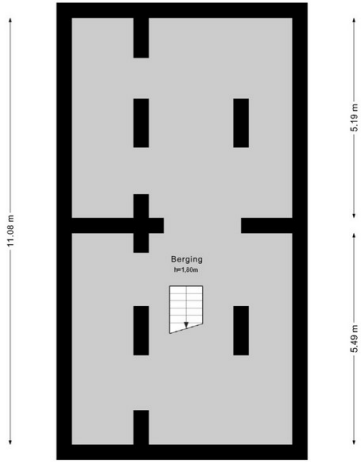
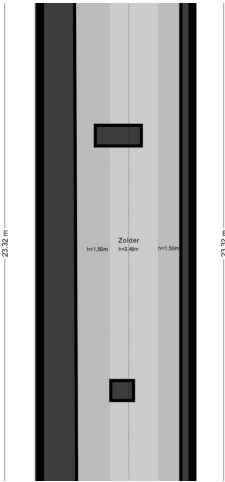
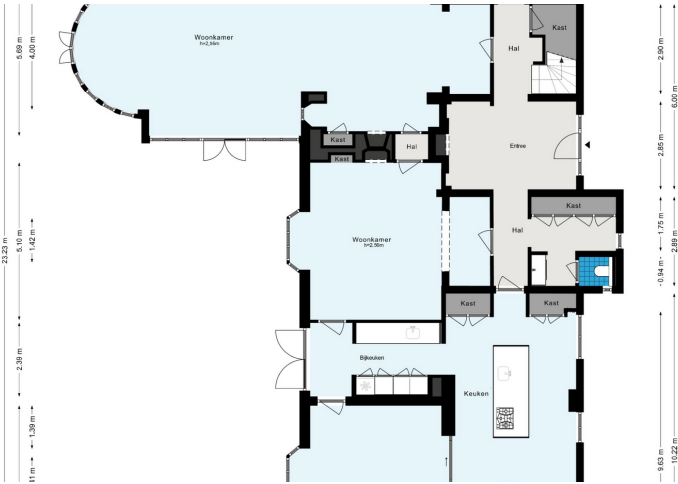
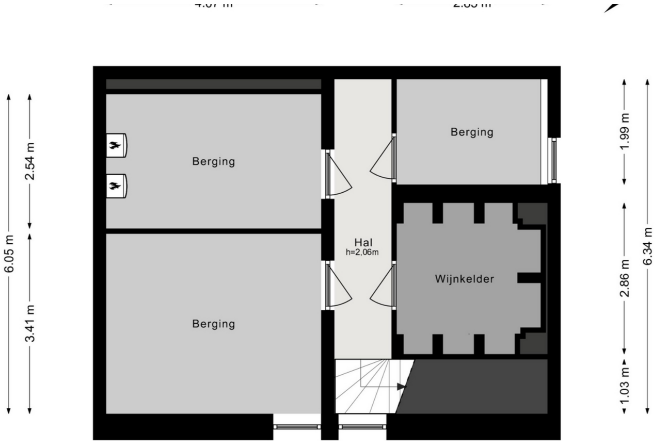














Nieuwsgierig geworden?

Wij helpen u graag
Bel ons voor meer informatie
of een bezichtiging

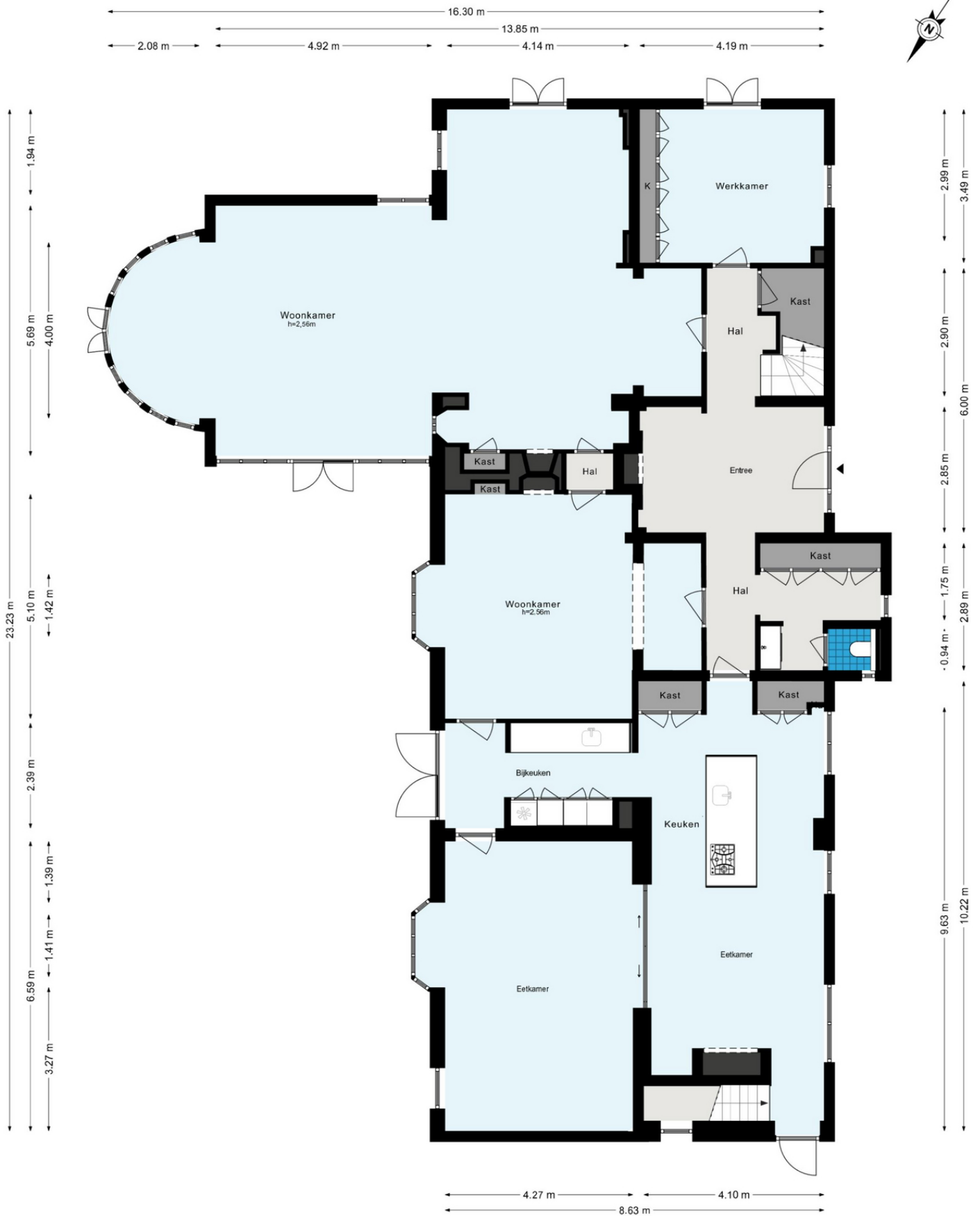
☎ 0252-419049

Marie-José

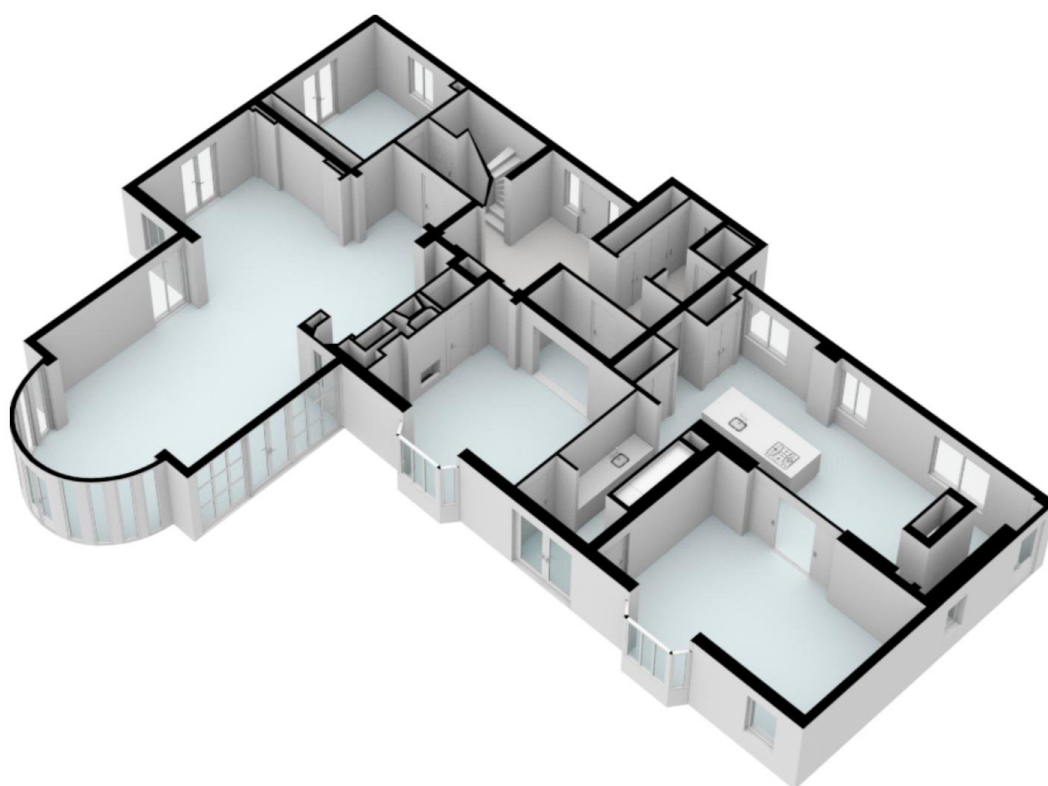
WILBRINK

M A K E

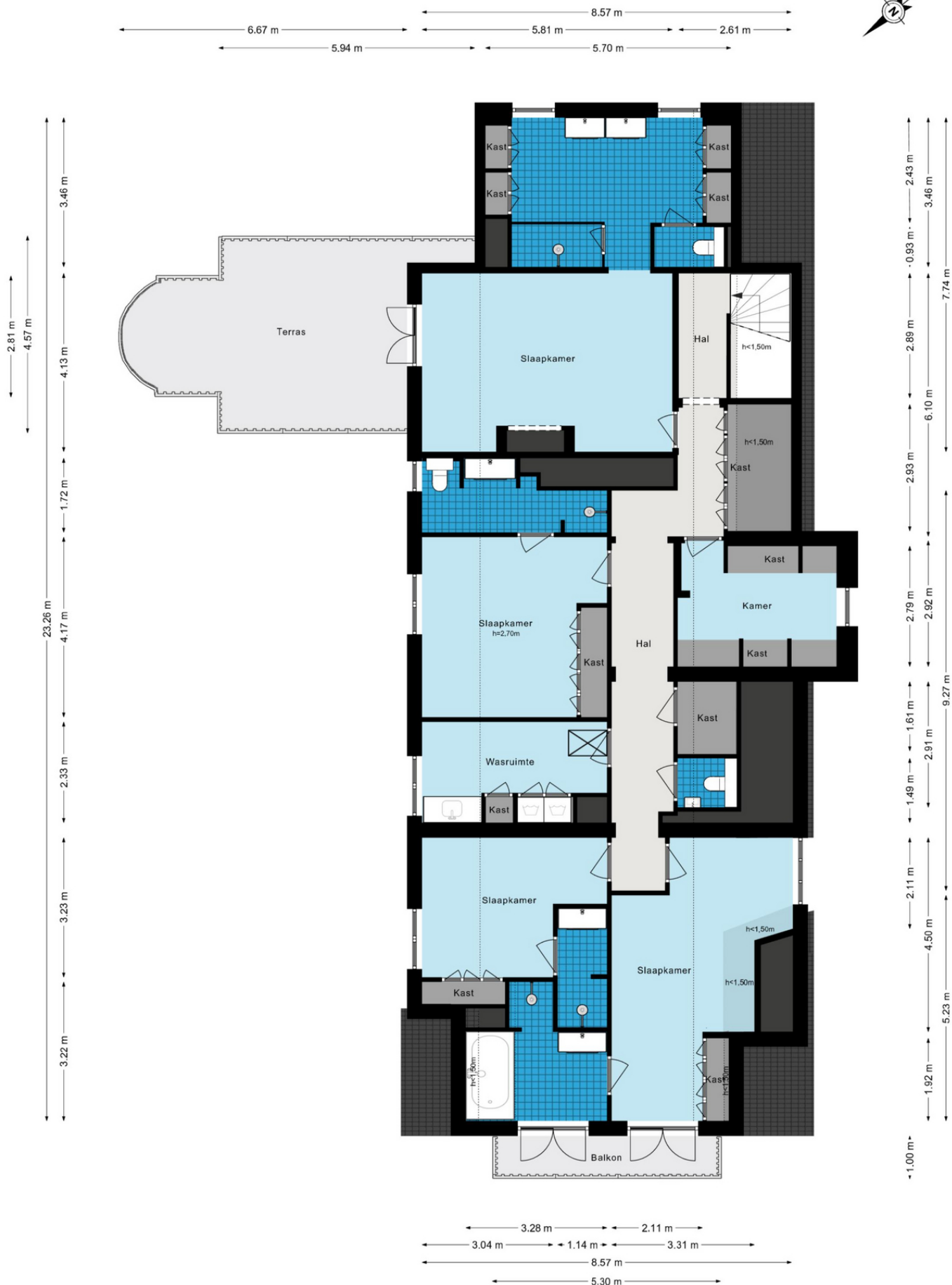
Gooweg 14 - Noordwijk
Begane grond

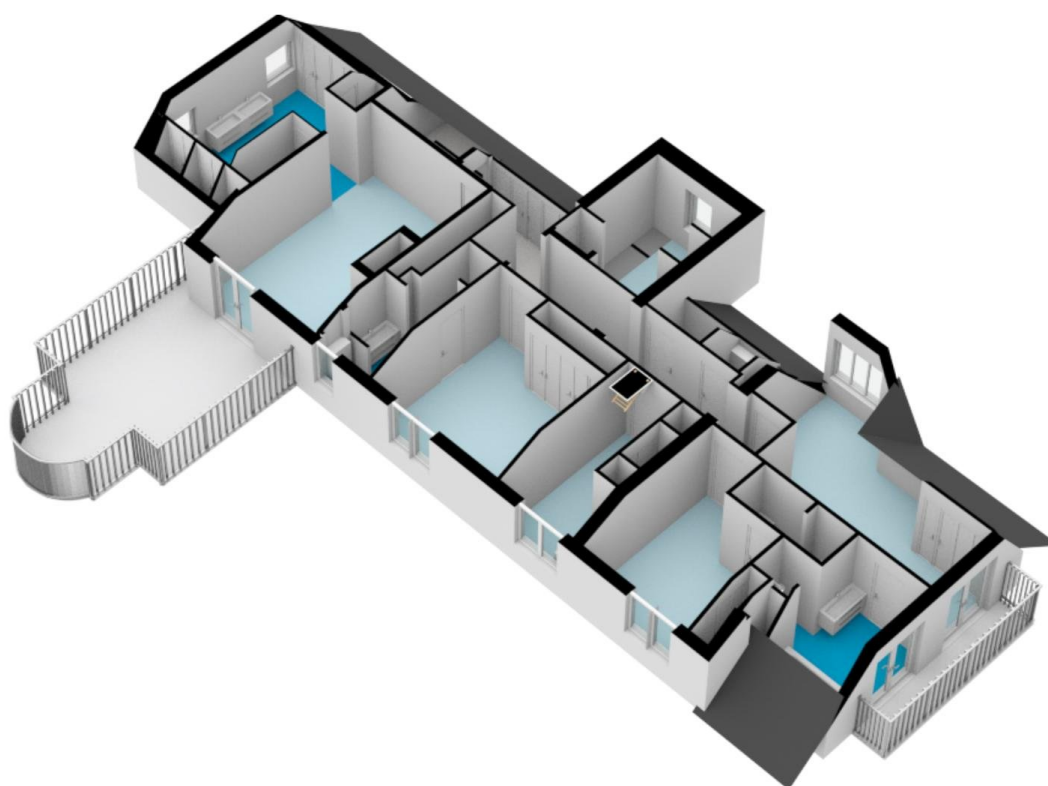


De plattegronden zijn geproduceerd voor promotionele doeleinden en ter indicatie.
Aan de plattegronden kunnen geen rechten worden ontleend.
© www.woningmedia.nl



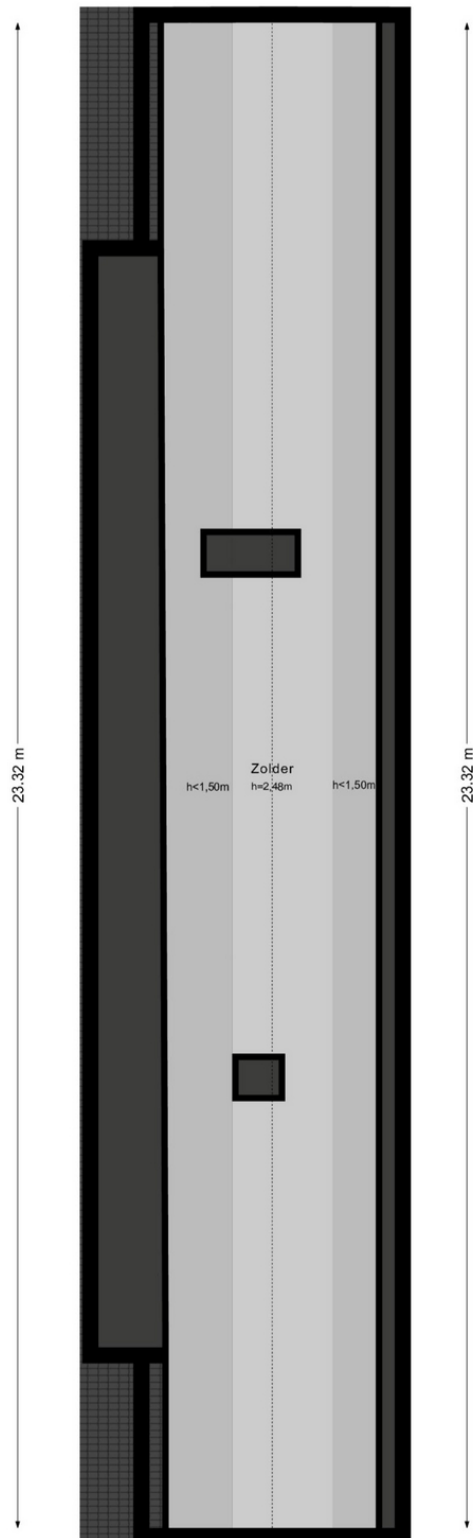
Gooweg 14 - Noordwijk
Eerste verdieping





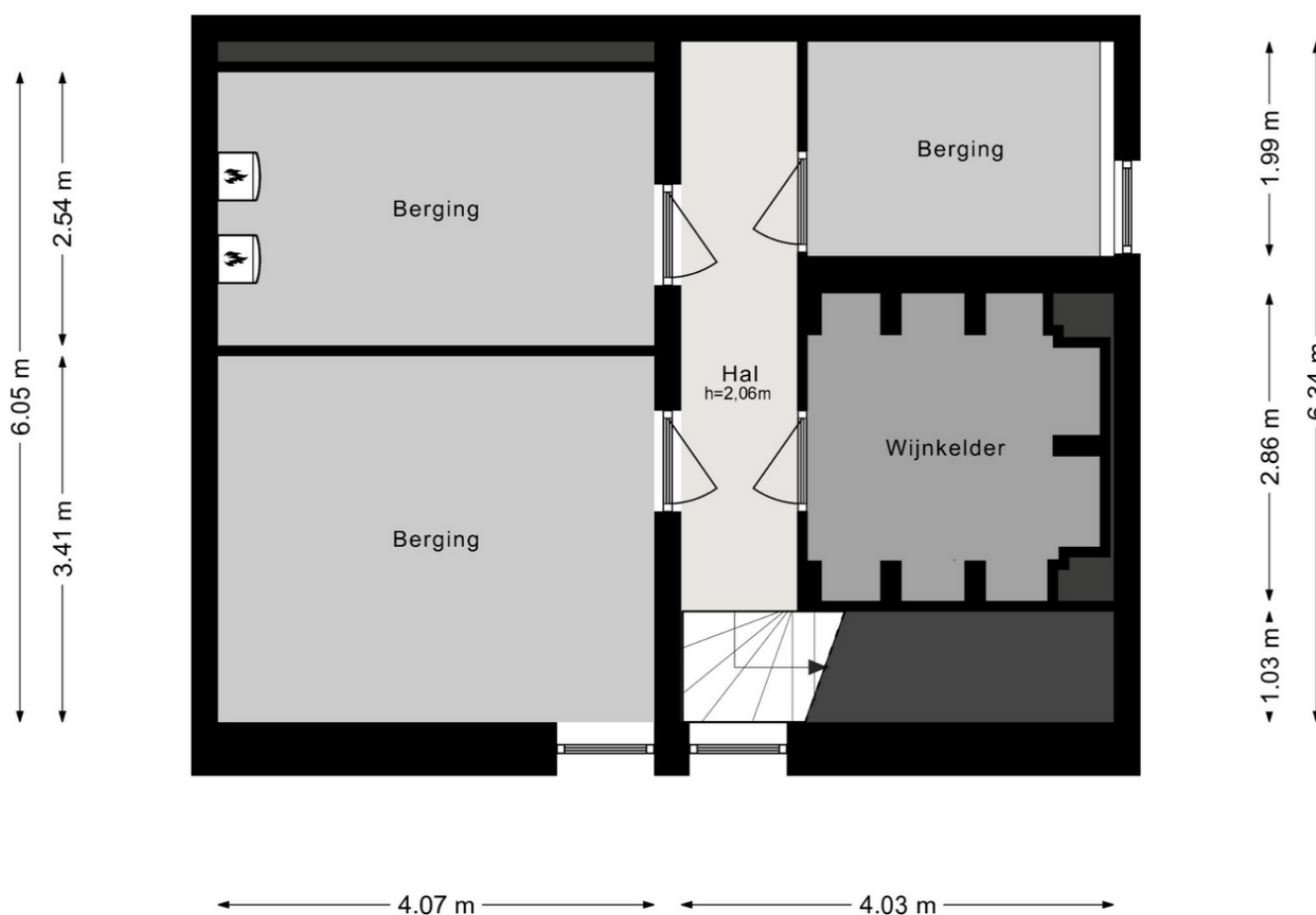
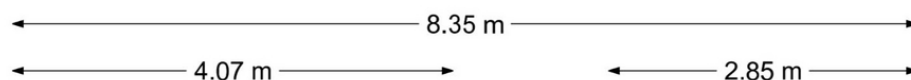
Gooweg 14 - Noordwijk
Tweede verdieping

4.60 m
3.28 m

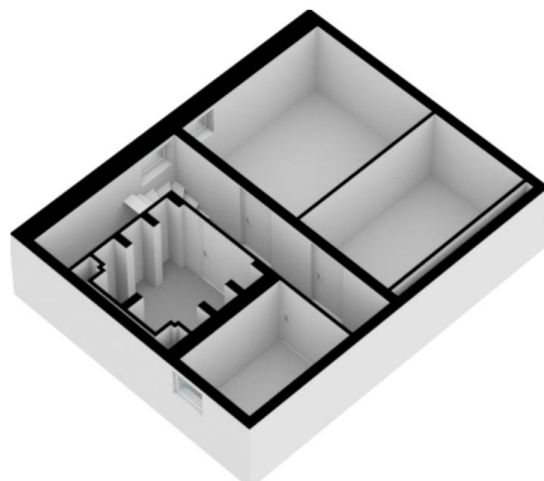




Gooweg 14 - Noordwijk Souterrain



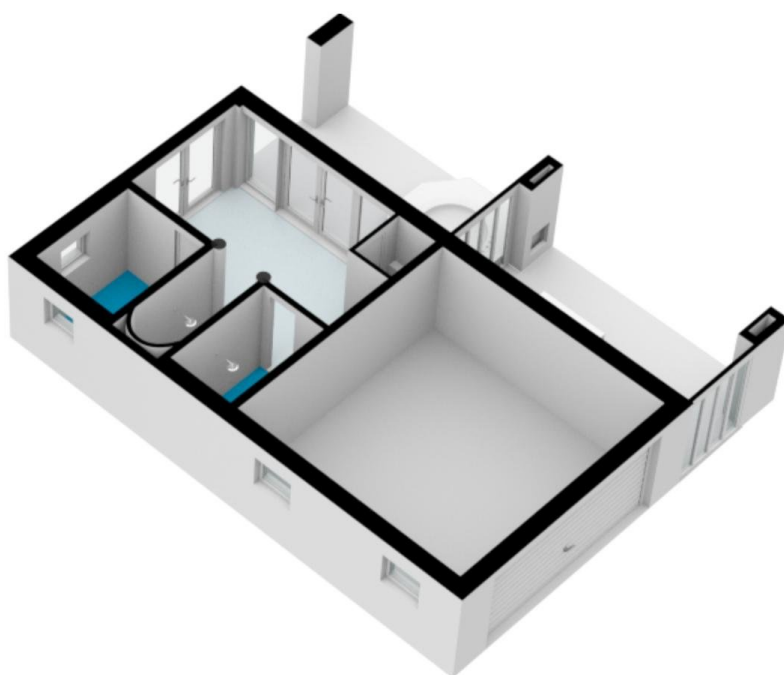
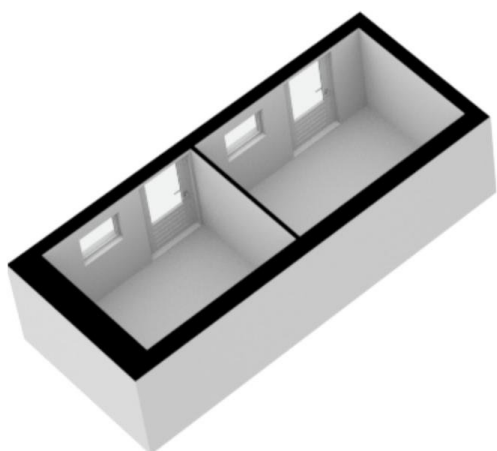
De plattegronden zijn geproduceerd voor promotionele doeleinden en ter indicatie.
Aan de plattegronden kunnen geen rechten worden ontleend.
© www.woningmedia.nl



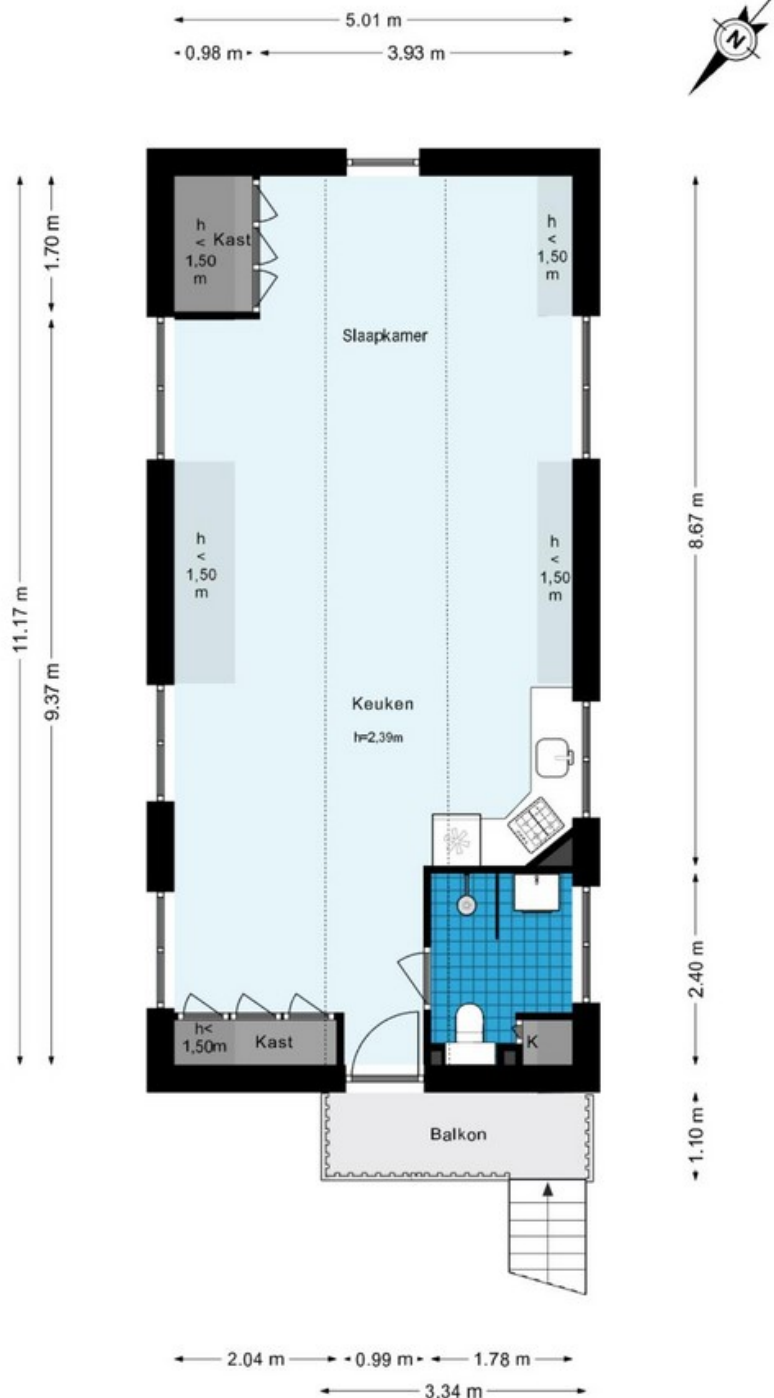
Gooweg 14 - Noordwijk
Begane grond - Tuinhuis



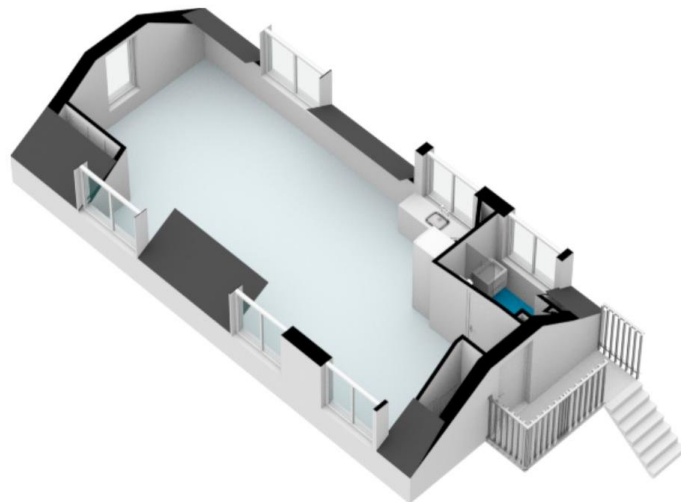
De plattegronden zijn geproduceerd voor promotionele doeleinden en ter indicatie.
Aan de plattegronden kunnen geen rechten worden ontleend.
© www.woningmedia.nl



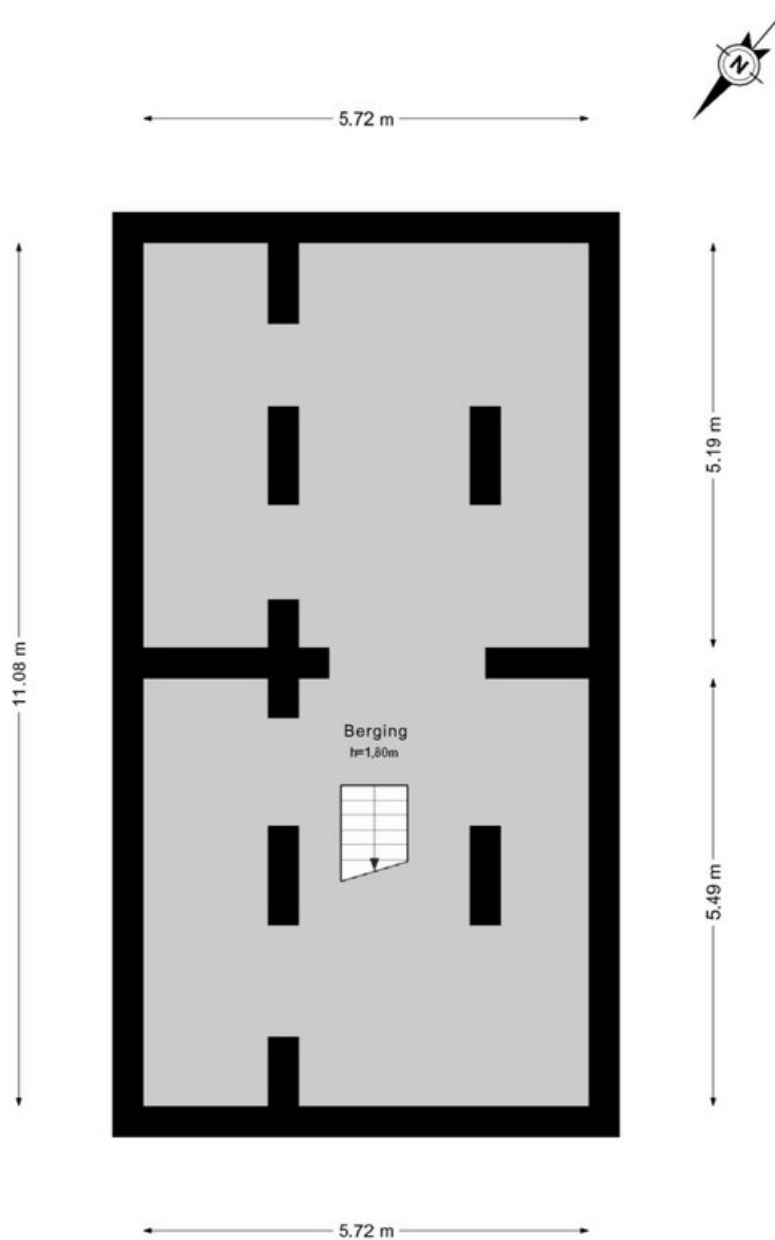
Gooweg 14 - Noordwijk
Eerste verdieping - Tuinhuis



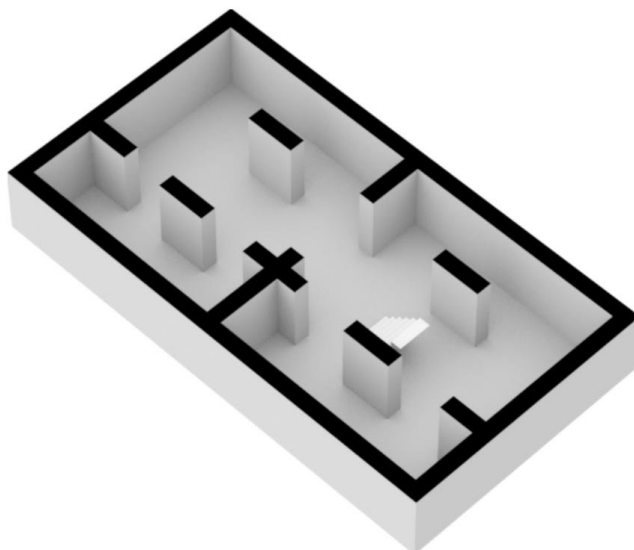
De plattegronden zijn geproduceerd voor promotionele doeleinden en ter indicatie.
Aan de plattegronden kunnen geen rechten worden ontleend.
© www.woningmedia.nl



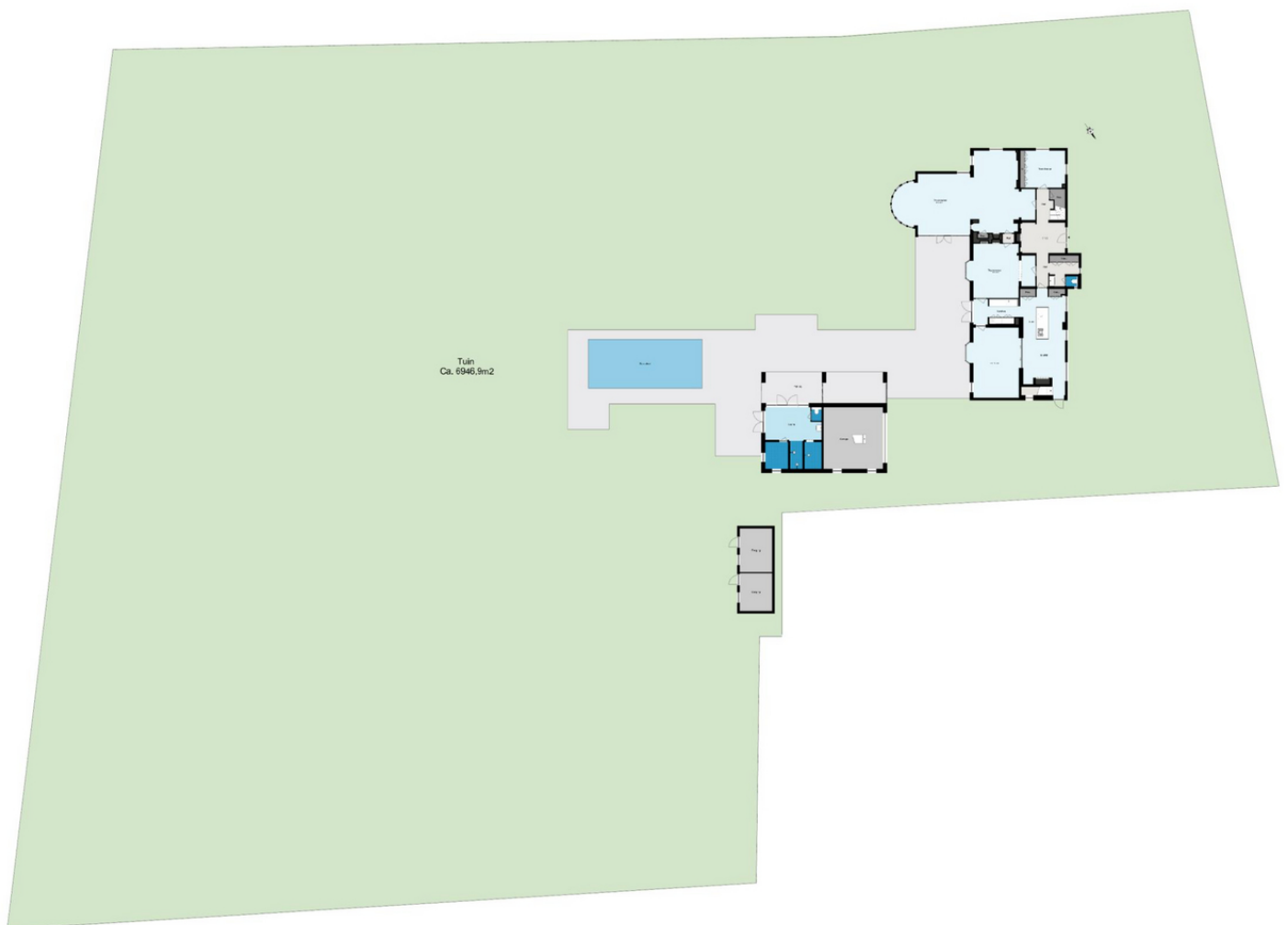
Gooweg 14 - Noordwijk
Kelder - Tuinhuis



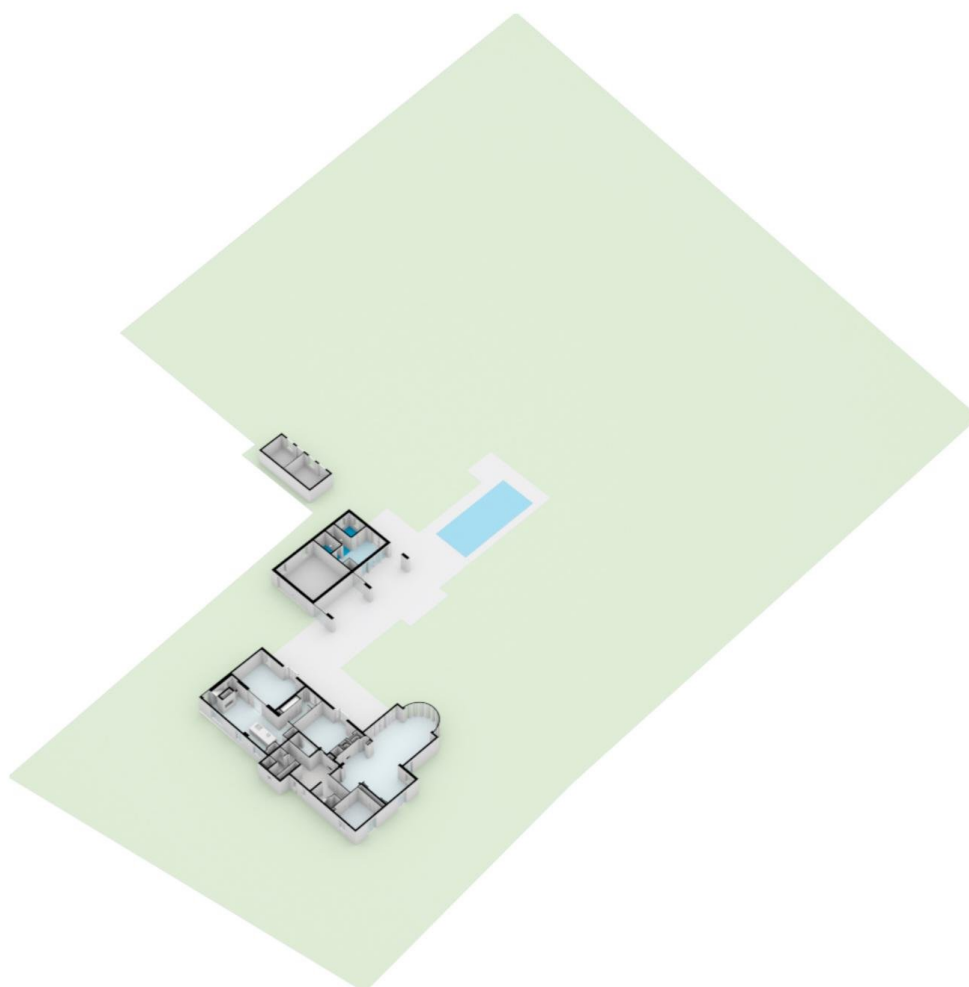
De plattegronden zijn geproduceerd voor promotionele doeleinden en ter indicatie.
Aan de plattegronden kunnen geen rechten worden ontleend.
© www.woningmedia.nl



Goeweg 14 - Noordwijk
Perceeltekening



De plattegronden zijn geproduceerd voor promotionele doeleinden en ter indicatie.
Aan de plattegronden kunnen geen rechten worden ontleend.
© 2020 www.noordwijk.nl







MAKELAARSCHAP - ELBURG

Jufferenstraat 1
8081 CP Elburg

+31 0525745805
welkom@makelaarschap.nl

WWW.MAKELAARSCHAP.NL



WWW.BAERZ.COM